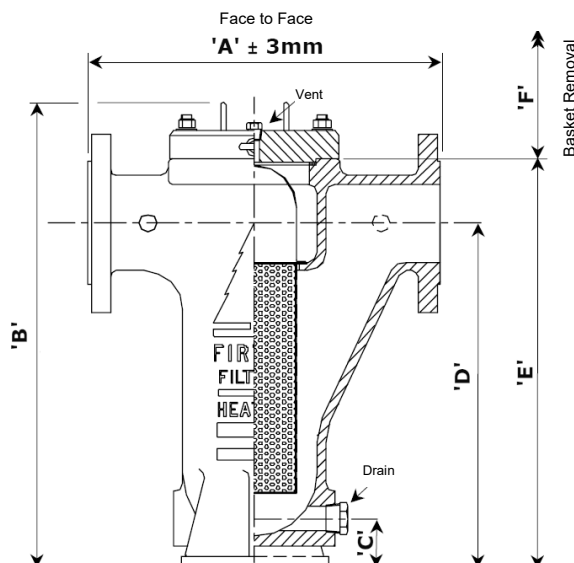


- Sizes :** DN25 to DN300
- Pressure:** PN16
- Flanges:** EN 1092-1
- Features:**
- Integrally cast housing
 - Bolted closure
 - Red oxide finish (Carbon Steel only)
 - Ø 3 mm perforated hole plate as standard
 - Integral feet on 6" and over
- Advantages:**
- Largest filtration area on the market
 - Very low pressure losses dp
 - Extended cleaning intervals
 - European design
- Options:**
- Special baskets and special gaskets
 - DP tappings / gauge
 - Magnetic basket insert
 - Flanged drains
 - Drain valves
 - Special finish / linings
- Standards:** PED 2014/68/EU
ANSI B16.5 Flange dimensions
EN 10204 / NACE Certification



All data is subject to confirmation at the time of order. Our policy is one of continual improvement and we reserve the right to amend details without prior notice.

Technical Data

Size		Dimensions						Basket Area [cm ²]	Vent (NPT)	Drain (NPT)	Weight (kg)
mm	Inch	A	B	C	D	E	F				
25	1"	232,0	265,0	28,0	190,0	225,0	200,0	241,0	1/4"	3/4"	6,5
40	1 1/2"	240,0	335,0	35,0	254,0	297,0	275,0	375,0	1/4"	3/4"	11,0
50	2"	315,0	395,0	38,0	314,0	362,0	340,0	488,0	1/4"	3/4"	30,0
80	3"	360,0	450,0	40,0	342,0	411,0	375,0	652,0	3/8"	3/4"	34,0
100	4"	440,0	550,0	47,0	426,0	505,0	450,0	1088,0	3/8"	1"	70,0
150	6"	595,0	790,0	95,0	619,0	734,0	630,0	2151,0	1/2"	1 1/2"	135,0
200	8"	705,0	1000,0	112,5	787,0	927,0	800,0	3973,0	1/2"	1 1/2"	235,0
250	10"	845,0	1160,0	120,0	908,0	1077,0	940,0	5304,0	1/2"	1 1/2"	380,0
300	12"	1005,0	1320,0	175,0	1000,0	1215,0	1180,0	8295,0	1/2"	2"	530,0

Materials of Construction

Item	LT Carbon Steel	Carbon Steel	Stainless Steel
Strainer body (cast)	ASTM A352 LCB/LCC Dual Cert	ASTM A216 WCB (~1.0619)	ASTM A351 CF8M (~1.4408)
Strainer cover*	ASTM A352 LCB/LCC Dual Cert	ASTM A516 Gr60 / A216 WCB	ASTM A240 316 / A351 CF8M (~1.4408)
Strong back	ASTM A352 LCB/LCC Dual Cert	ASTM A216 WCB (~1.0619)	ASTM A351 CF8M (~1.4408)
Drain plug	ASTM A350 LF2	ASTM A105N (~1.0460)	ASTM A182 F316 (~1.4404)
Vent plug	ASTM A350 LF2	ASTM A105N (~1.0460)	ASTM A182 F316 (~1.4404)
Strainer basket	Stainless Steel 316 (Ø 3 mm perforated hole plate as standard / to customer specification)		
Cover gasket	C.N.A.F. as standard / to customer specification		
Cover stud bolts	ASTM A193 B7M – zinc plated		
Cover full nuts	ASTM A194 2HM – zinc plated		
Cover washer	Carbon steel – zinc plated		

*The strainer cover may be furnished from plate or casting depending upon size / availability.

Model Number Derivation : **A***/PN16/***/MBC**

Size, i.e. add 025 for a 1"

352 for Low Temperature Carbon Steel
216 for carbon steel (A216 WCB)
351 for stainless steel (A351 CF8M)